

GIRLS' SWEET 16 CHAMPIONSHIP

First Round

NICHOLAS COUNTY

VS.

WHITESBURG

March 24, 1993

VISITORS (Last Name, First)

NO.	WHITESBURG	Tot FG		3-POINT		FT	FTA	Rebounds			PF	TP	A	TO	BLK	S	TIME
		FG	FGA	FG	FGA			OFF	DEF	TOT							
34	YONTS, JESSICA	2	5	0	0	0	1	3	1	4	4	4	0	0	0	0	20:05
40	SWISHER, HILARY	1	4	0	0	3	6	2	1	3	5	5	3	5	0	2	28:44
33	BLAIR, TENNILLE	6	17	0	0	0	0	3	2	5	4	12	1	1	0	2	23:54
14	BAKER, AMANDA	7	17	0	4	2	2	2	1	3	2	16	3	4	0	5	29:12
22	TAYLOR, CHRISTIE	1	5	0	2	0	1	2	3	5	0	2	0	1	0	2	26:22
05	WYNN, VALARIE	2	6	0	0	0	0	4	0	4	4	4	0	1	0	0	15:51
42	HENSON, TRYSH	2	3	0	1	0	0	0	1	1	3	4	0	2	0	1	11:17
53	ISOM, FELISHA	0	0	0	0	0	0	0	0	0	0	0	0	0	0	0	3:12
43	ADAMS, CHRISTIE	0	0	0	0	0	0	0	0	0	0	0	0	0	0	0	0:45
25	FIELDS, ADRIAN	0	0	0	0	0	0	0	0	0	1	0	2	0	0	0	0:38
TEAM REBOUNDS (INCLUDED IN TOTALS)																	
TOTALS		21	57	0	7	5	10	16	9	25	23	47	9	14	0	12	160
TOTAL FG	1st HALF	5/14	35.7%	2nd HALF	16/43	37.2% GAME	21/57	36.8%	DEADBALL								
3-POINT FG	1st HALF	0/1	0.0%	2nd HALF	0/6	0.0% GAME	0/7	0.0%	REBOUNDS	2							
FREE THROWS	1st HALF	2/2	100.0%	2nd HALF	3/8	37.5% GAME	5/10	50.0%									

HOME (Last Name, First)

NO.	NICHOLAS COUNTY	Tot FG		3-POINT		FT	FTA	Rebounds			PF	TP	A	TO	BLK	S	TIME
		FG	FGA	FG	FGA			OFF	DEF	TOT							
11	LYNVILLE, RENEE	3	4	1	1	0	2	1	1	2	2	7	3	1	0	0	29:43
20	SCHANDING, E.	2	2	0	0	0	0	0	0	0	2	4	1	5	0	3	27:37
52	DENKINS, KIM	7	10	0	0	5	8	4	11	15	3	19	2	1	4	0	28:37
21	SMOOT, NIKKI	3	7	0	0	4	4	0	3	3	2	10	3	5	0	2	30:53
22	HAYTON, CHRISTIE	4	8	2	3	9	12	3	2	5	2	19	5	6	0	2	31:55
12	GEORGE, TARA	0	0	0	0	0	0	0	0	0	1	0	1	1	0	0	5:28
53	HOPKINS, M.	0	2	0	0	0	0	1	1	2	0	0	0	1	0	0	4:17
41	LIVINGOOD, I.	1	1	0	0	0	0	0	1	1	0	2	0	0	0	0	0:38
35	SIEBERT, ALICIA	0	0	0	0	0	0	0	0	0	0	0	0	0	0	0	0:26
33	WILLOUGHBY, J.	0	0	0	0	0	0	0	0	0	0	0	1	0	0	0	0:26
TEAM REBOUNDS (INCLUDED IN TOTALS)																	
TOTALS		20	34	3	4	18	26	10	22	32	12	61	16	20	4	7	160
TOTAL FG	1st HALF	5/10	50.0%	2nd HALF	15/24	62.5% GAME	20/34	58.8%	DEADBALL								
3-POINT FG	1st HALF	0/0	0.0%	2nd HALF	3/4	75.0% GAME	3/4	75.0%	Rebounds	4							
FREE THROWS	1st HALF	2/2	100.0%	2nd HALF	16/24	66.7% GAME	18/26	69.2%									

OFFICIALS: ROBERT CARLTON, NATHAN RUSSELL, ALT. - JAN BAKER
 Technicals: None

SCORE BY PERIODS

WHITESBURG	12	7	10	18	=	47
NICHOLAS COUNTY	12	15	14	20	=	61

Attendance: 4,275

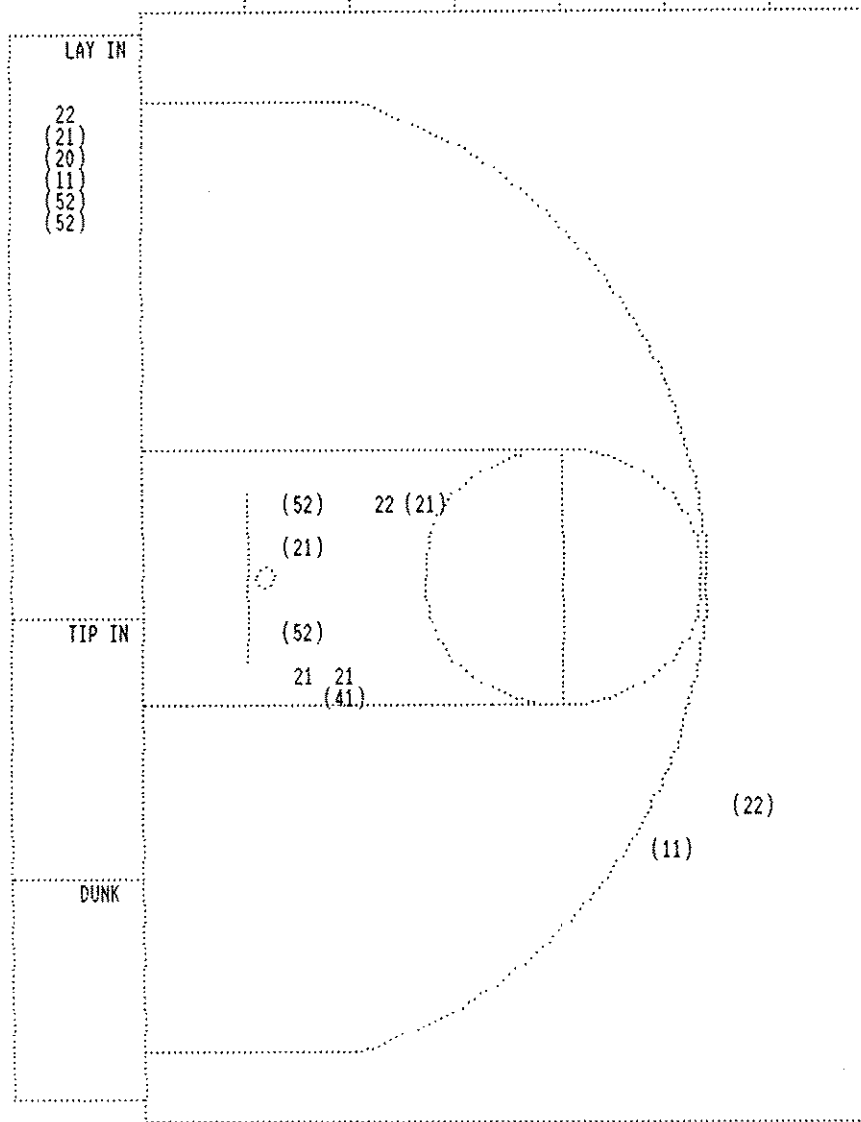
COMMENTS: POINTS OFF TURNOVERS

WHITESBURG 20 NICHOLAS COUNTY 20 WHITESBURG SECOND CHANCE POINTS 11 NICHOLAS COUNTY 8

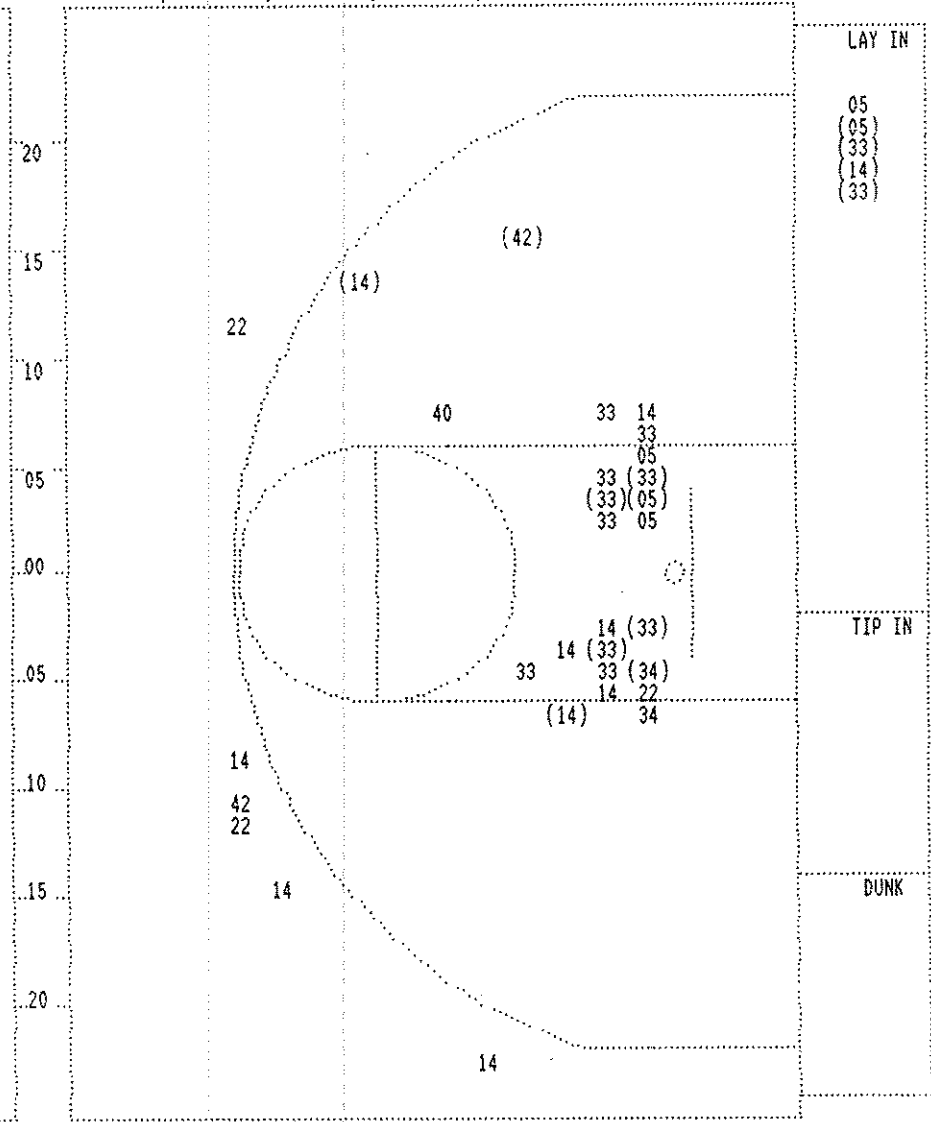
Player	Team	NICHOLAS COUNTY	Time	Score	WHITESBURG	Player	Team
LINVILLE, RENEE, SCHANDING, E., DENKINS, KIM, SMOOT, NIKKI, HATTON, CHRISTIE					SWISHER, HILARY, HENSON, TRYSH, TAYLOR, CHRISTIE, WYNN, VALARIE, YONTS, JESSICA		
			4 7:50	41-31*	Ball to LADY JACKETS Jump shot Layup by WYNN, VALARIE	1-4	25.0% 13-39 33.3%
					Assist by SWISHER, HILARY	3	6
			4 7:20		Foul on HENSON, TRYSH	2	4
			4 7:20		Sub In: BAKER, AMANDA Out: TAYLOR, CHRISTIE		
			4 7:01		Foul on YONTS, JESSICA	4	5
			4 7:01		Sub In: BLAIR, TENNILLE Out: YONTS, JESSICA		
6-8	75.0%	11-14 79.5%	HATTON, CHRISTIE, 2	Free Throws missed 1st made 2nd	4 7:01 *42-31		
					4 6:47 42-33*	2-10	20.0% 14-40 35.0%
					Driving Layup by BLAIR, TENNILLE	4	6
					Foul on BLAIR, TENNILLE		
0-2	00.0%	11-16 68.7%	LINVILLE, RENEE, 2	Free Throws missed both	4 6:30		
					4 6:26	4	7
					Foul on SWISHER, HILARY		
					Sub In: ISOM, FELISHA Out: BLAIR, TENNILLE		
7-10	70.0%	12-18 66.6%	HATTON, CHRISTIE, 2	Free Throws missed 1st made 2nd	4 6:26 *43-33	2-5	40.0% 15-42 35.7%
					4 6:06 43-35*	3	7
					4 ft Lane Bank by WYNN, VALARIE		
					Assist by BAKER, AMANDA		
2-2	100%	15-29 51.7%	SCHANDING, E.	Layup Off Fast Break by	4 5:54 *45-35		
2		11		Assist by LINVILLE, RENEE			
3-7	42.8%	16-30 53.3%	SMOOT, NIKKI	2 ft Lane Turnaround by	4 5:45	1	8
2		12		Assist by DENKINS, KIM	4 5:21 *47-35		
					4 4:33	3	9
					Foul on HENSON, TRYSH		
					Sub In: BLAIR, TENNILLE Out: ISOM, FELISHA		
3-5	60.0%	12-19 63.1%	DENKINS, KIM, 1 & Bonus	missed 1st	4 4:33		
					4 4:33	3-11	27.2% 16-44 36.3%
					4 4:11 47-37*		
					3 ft Lane Driving by BLAIR, TENNILLE		
3-4	75.0%	17-31 54.8%	LINVILLE, RENEE	Layup Off Fast Break by	4 3:56 *49-37		
5		13		Assist by HATTON, CHRISTIE			
					4 3:40	4	10
					Foul on WYNN, VALARIE		
					Sub In: YONTS, JESSICA Out: WYNN, VALARIE		
3-6	50.0%	12-20 60.0%	DENKINS, KIM, 1 & Bonus	missed 1st	4 3:40		
					4 3:29		
					Sub In: TAYLOR, CHRISTIE Out: HENSON, TRYSH		
					4 3:29		
					REB: 29 A: 13 BLK: 4 TO: 18 PF: 4		
					S: 7 FT: 12-20 60.0% FG: 17-31 54.8%		
					T I M E - 0 U T WHITESBURG No. 2		
					4 3:29		
					REB: 21 A: 7 BLK: 0 TO: 14 PF: 10		
					S: 11 FT: 5-10 50.0% FG: 16-45 35.5%		
					T I M E - 0 U T WHITESBURG No. 3		
					4 3:24	2	11
					Foul on BAKER, AMANDA		
5-8	62.5%	14-22 63.6%	DENKINS, KIM, 1 & Bonus	made both	4 3:24 *51-37		
6-9	66.6%	18-32 56.2%	DENKINS, KIM	Driving Layup by	4 2:47 *53-37		
3		14		Assist by SMOOT, NIKKI			
					4 2:34 53-39*	4-13	30.7% 17-48 35.4%
					4 ft Lane Turnaround by BLAIR, TENNILLE	6-14	42.8% 18-49 36.7%
					Layup Off Fast Break by BAKER, AMANDA		
					4 2:12		
					REB: 30 A: 14 BLK: 4 TO: 19 PF: 4		
					S: 7 FT: 14-22 63.6% FG: 18-32 56.2%		
					T I M E - 0 U T WHITESBURG No. 4		
7-10	70.0%	19-33 57.5%	DENKINS, KIM	Bank Layup by	4 2:05 *55-41		
3		15		Assist by LINVILLE, RENEE			
					4 1:20 55-43*	5-15	33.3% 19-53 35.8%
					4 1:00		
					Foul on SWISHER, HILARY	5	12
					Sub In: FIELDS, ADRIAN Out: SWISHER, HILARY		
4-4	100%	16-24 66.6%	SMOOT, NIKKI, 1 & Bonus	made both	4 0:38 *57-43		
					4 0:38	6-17	35.2% 20-55 36.3%
					Sub In: LIVINGOOD, T. Out: DENKINS, KIM	1	8
					4 0:31 57-45*	1	13
					Driving Layup by BLAIR, TENNILLE		
					Assist by FIELDS, ADRIAN		
					Foul on FIELDS, ADRIAN		
					4 0:26		
					Sub In: SIEBERT, ALICI Out: SCHANDING, E.		
					Sub In: WILLOUGHBY, J. Out: SMOOT, NIKKI		
9-12	75.0%	18-26 69.2%	HATTON, CHRISTIE, 1 & Bonus	made both	4 0:26 *59-45	7-17	41.1% 21-56 37.5%
					4 0:21 59-47*	2	9
					20 ft Left Angle Jump shot by BAKER, AMANDA		
					Assist by FIELDS, ADRIAN		
1-1	100%	20-34 58.8%	LIVINGOOD, T.	4 ft Lane Turnaround by	4 0:09 *61-47		
1		16		Assist by WILLOUGHBY, J.			
					4 0:00	1-5	20.0% 21-57 36.8%
					3 pt 22 ft Right Angle Jump shot		
					by TAYLOR, CHRISTIE, missed		
0-1	Tot-1	D-1 Tot-32		Rebound by LIVINGOOD, T.	4 0:00		

Player	Team	NICHOLAS COUNTY	Time	Score	WHITESBURG	Player	Team
LINVILLE, RENEE, SCHANDING, E., DENKINS, KIM, SMOOT, NIKKI, HATTON, CHRISTIE					YONTS, JESSICA, SWISHER, HILARY, BLAIR, TENNILLE, BAKER, AMANDA, TAYLOR, CHRISTIE		
			3 7:16	27-21*	4 ft Lane Follow by YONTS, JESSICA	2-4	50.0% 9-25 36.0%
1	1	Foul on HATTON, CHRISTIE	3 7:16				
2	2	Foul on DENKINS, KIM	3 7:16		YONTS, JESSICA, 1 Free Throw missed	0-1	00.0% 3-6 50.0%
4-7	57.1% 9-20 45.0%	4 ft Lane Bank by DENKINS, KIM	3 6:25				
1	6	Assist by LINVILLE, RENEE	3 6:25	27-23*	BAKER, AMANDA, 1 & Bonus made both	2-2	100% 5-8 62.5%
			3 6:01	*29-23			
			3 5:46		Foul on BLAIR, TENNILLE	3	1
2-3	66.6% 10-21 47.6%	3 pt 22 ft Left Angle Jump shot by LINVILLE, RENEE	3 5:46		Sub In: WYNN, VALARIE Out: BLAIR, TENNILLE		
1	7	Assist by DENKINS, KIM	3 5:46	*32-23			
2	3	Foul on LINVILLE, RENEE	3 5:03				
3	4	Foul on DENKINS, KIM	3 4:36				
			3 4:36		Sub In: BLAIR, TENNILLE Out: SWISHER, HILARY		
		REB: 19 A: 7 BLK: 3 TO: 13 PF: 4	3 4:36		REB: 17 A: 3 BLK: 0 TO: 10 PF: 1		
S: 7	FT: 10-12 83.3% FG: 10-22 45.4%	No. 1 NICHOLAS COUNTY	T I M E - O U T		S: 8 FT: 5-8 62.5% FG: 9-30 30.0%		
			3 4:36		Sub In: SWISHER, HILARY Out: YONTS, JESSICA		
			3 4:36		SWISHER, HILARY, 1 Free Throw missed	3-5	60.0% 5-9 55.5%
			3 4:31		SWISHER, HILARY, 1 Free Throw missed	3-6	50.0% 5-10 50.0%
			3 3:56		Foul on SWISHER, HILARY	2	2
			3 3:42		Foul on SWISHER, HILARY	3	3
5-8	62.5% 11-24 45.8%	2 ft Lane Bank by DENKINS, KIM	3 3:33	*34-23			
4	8	Assist by HATTON, CHRISTIE					
			3 3:25	34-25*	7 ft Lane Jump shot by BAKER, AMANDA	5-10	50.0% 10-32 31.2%
			3 3:12		Sub In: YONTS, JESSICA Out: WYNN, VALARIE		
			3 2:11	34-27*	2 ft Lane Turnaround by BLAIR, TENNILLE	1-9	11.1% 11-34 32.3%
					Assist by BAKER, AMANDA	2	4
1-4	25.0% 12-25 48.0%	Layup Off Fast Break by SMOOT, NIKKI	3 2:01	*36-27			
1	9	Assist by SCHANDING, E.					
4-8	50.0% 13-26 50.0%	3 pt 24 ft Left Angle Jump shot by HATTON, CHRISTIE	3 1:40	*39-27			
2	10	Assist by SMOOT, NIKKI					
		Sub In: HOPKINS, M. Out: DENKINS, KIM	3 1:20		Sub In: HENSON, TRYSH Out: BAKER, AMANDA		
			3 1:20				
		REB: 23 A: 10 BLK: 4 TO: 16 PF: 4	3 1:20		REB: 19 A: 4 BLK: 0 TO: 12 PF: 3		
S: 7	FT: 10-12 83.3% FG: 13-26 50.0%	T I M E - O U T	WHITESBURG No. 1		S: 10 FT: 5-10 50.0% FG: 11-36 30.5%		
2-5	40.0% 14-27 51.8%	7 ft Lane Jump shot by SMOOT, NIKKI	3 1:09	*41-27			
			3 0:12	41-29*	17 ft Left Side Jump shot by HENSON, TRYSH	2-2	100% 12-37 32.4%
					Assist by SWISHER, HILARY	2	5

SECOND HALF SHOT CHART Produced by the KHSAA Sweet Sixteen Stat Crew with FINAL III - a Product of LEXICON SPORTS™



NICHOLAS COUNTY				
Player		Player		Player
11 - LINVILLE,	2 / 2 100.0%	41 - LIVINGOOD,	1 / 1 100.0%	
20 - SCHANDING,	1 / 1 100.0%			
52 - DENKINS, K	4 / 4 100.0%			
21 - SHOOT, NIK	3 / 5 60.0%			
22 - HATTOW, CHR	1 / 3 33.3%			
Layups	1-9 Ft	10-15 Ft	Over 15 Ft	3 Pointers Total
5 / 6	5 / 8		2 / 2	12 / 16
83.3%	62.5%		100.0%	75.0%



WHITESBURG				
Player		Player		Player
34 - YONTS, JES	1 / 2 50.0%	05 - WYNN, VALA	2 / 5 40.0%	
40 - SWISHER, H	0 / 1 0.0%	42 - HENSON, TR	1 / 2 50.0%	
33 - BLAIR, TEN	6 / 12 50.0%			
14 - BAKER, AMA	3 / 10 30.0%			
22 - TAYLOR, CHR	0 / 3 0.0%			
Layups	1-9 Ft	10-15 Ft	Over 15 Ft	3 Pointers Total
4 / 5	7 / 21	0 / 1	2 / 2	0 / 6 13 / 35
80.0%	33.3%	0.0%	100.0%	0.0%

FINAL III - A Product of COMPETITIVE EDGE, INC.
 (C) Copyright Davies & Associates, Inc.
 All Rights Reserved

Official Boxscore * OFFICIAL FIRST HALF *

Date: 03-24-93 Site:GIRLS STATE TOURNEY GM 2

VISITORS (Last Name, First)

NO.	WHITESBURG	Tot FG		3-POINT		FT	FTA	Rebounds			PF	TP	A	TO	BLK	S	TIME
		FG	FGA	FG	FGA			OFF	DEF	TOT							
34	YONTS, JESSICA	1	3	0	0	0	0	0	0	0	3	2	0	0	0	8:50	
40	SWISHER, HILARY	1	3	0	0	3	4	0	0	0	1	5	1	3	0	13:22	
33	BLAIR, TENNILLE	0	5	0	0	0	0	1	1	2	2	0	1	1	0	11:58	
14	BAKER, AMANDA	4	7	0	1	0	0	0	1	1	0	3	1	2	0	15:12	
22	TAYLOR, CHRISTIE	1	2	0	0	0	1	2	3	5	0	2	0	1	0	14:13	
05	WYNN, VALARIE	0	1	0	0	0	0	2	0	2	3	0	0	0	0	8:57	
42	HENSON, TRYSH	1	1	0	0	0	0	0	1	1	1	2	0	2	0	5:26	
53	ISOM, FELISHA	0	0	0	0	0	0	0	0	0	0	0	0	0	0	1:19	
43	ADAMS, CHRISTIE	0	0	0	0	0	0	0	0	0	0	0	0	0	0	0:45	
TEAM REBOUNDS (INCLUDED IN TOTALS)																	
TOTALS		8	22	0	1	3	5	5	6	11	10	19	3	9	0	6	80

TOTAL FG	1st HALF	5/14	35.7%	2nd HALF	3/8	37.5%	GAME	8/22	36.4%	DEADBALL	
3-POINT FG	1st HALF	0/1	0.0%	2nd HALF	0/0	0.0%	GAME	0/1	0.0%	REBOUNDS	1
FREE THROWS	1st HALF	2/2	100.0%	2nd HALF	1/3	33.3%	GAME	3/5	60.0%		

HOME (Last Name, First)

NO.	NICHOLAS COUNTY	Tot FG		3-POINT		FT	FTA	Rebounds			PF	TP	A	TO	BLK	S	TIME
		FG	FGA	FG	FGA			OFF	DEF	TOT							
11	LINVILLE, RENEE	1	2	0	0	0	0	0	1	1	1	2	0	0	0	13:43	
20	SCHANDING, E.	1	1	0	0	0	0	0	0	0	2	2	0	4	0	2	12:03
52	DENKINS, KIM	3	6	0	0	3	4	3	4	7	1	9	0	1	3	0	14:35
21	SMOOT, NIKKI	0	2	0	0	2	2	0	2	2	2	2	1	1	0	2	15:19
22	HATTON, CHRISTIE	3	5	1	2	5	6	1	0	1	0	12	3	3	0	2	15:55
12	GEORGE, TARA	0	0	0	0	0	0	0	0	0	1	0	1	1	0	0	5:28
53	HOPKINS, M.	0	2	0	0	0	0	1	1	2	0	0	0	1	0	0	2:57
TEAM REBOUNDS (INCLUDED IN TOTALS)																	
TOTALS		8	18	1	2	10	12	6	9	15	7	27	5	11	3	6	80

TOTAL FG	1st HALF	5/10	50.0%	2nd HALF	3/8	37.5%	GAME	8/18	44.4%	DEADBALL	
3-POINT FG	1st HALF	0/0	0.0%	2nd HALF	1/2	50.0%	GAME	1/2	50.0%	Rebounds	1
FREE THROWS	1st HALF	2/2	100.0%	2nd HALF	8/10	80.0%	GAME	10/12	83.3%		

OFFICIALS: ROBERT CARLTON, NATHAN RUSSELL, ALT.-JAN BAKER SCORE BY PERIODS
 Technicals: None
 WHITESBURG 12 7 = 19
 NICHOLAS COUNTY 12 15 = 27

Attendance: 4,275

COMMENTS: POINTS OFF TURNOVERS SECOND CHANCE POINTS
 WHITESBURG 10 NICHOLAS COUNTY 12 WHITESBURG 3 NICHOLAS COUNTY 4

Produced by the KHSAA Sweet Sixteen Stat Crew with FINAL III - a Product of LEXICON SPORTS™

WHITESBURG "LADY JACKETS" vs NICHOLAS COUNTY "LADY JACKETS"
1st Half Play by Play

Player	Team	NICHOLAS COUNTY		
LINVILLE, RENEE, SCHANDING, E., DENKINS, KIM, SMOOT, NIKKI, HATTON, CHRISTIE				
1-1 1	100%	1-1 1	100%	2 ft Lane Bank by DENKINS, KIM Assist by HATTON, CHRISTIE
2-2 1 1	100%	2-2 1 2	100%	DENKINS, KIM, 2 Free Throws made both Foul on SHOOT, NIKKI Foul on LINVILLE, RENEE
2-3	66.6%	2-3	66.6%	Follow Rebound by DENKINS, KIM
1-1 2	100%	3-4 2	75.0%	Layup Off Fast Break by SCHANDING, E. Assist by HATTON, CHRISTIE
1-1 1	100%	4-5 3	80.0%	4 ft Lane Driving by HATTON, CHRISTIE Player Control Foul on DENKINS, KIM Sub In: GEORGE, TARA Out: HATTON, CHRISTIE Sub In: HATTON, CHRISTIE Out: LINVILLE, RENEE Sub In: HOPKINS, M. Out: DENKINS, KIM
2-2 1	100%	5-8 4	62.5%	3 ft Lane SHOT Off Fast Break by HATTON, CHRISTIE Foul on GEORGE, TARA Sub In: DENKINS, KIM Out: SCHANDING, E.

PAGE : 1

Tip off at 2:30 p.m. on 03/24/93 at GIRLS STATE TOURNEY GM 2
Produced by the KHSAA Sweet Sixteen Stat Crew with FINAL III - a Product of LE

Time	Score	WHITESBURG	Player	Team
1 7:33	*2-0	YONTS, JESSICA, SWISHER, HILARY, BLAIR, TENNILLE, BAKER, AMANDA, TAYLOR, CHRISTIE		Ball to LADY JACKETS
1 7:18		Foul on BLAIR, TENNILLE	1	1
1 6:54		Foul on SWISHER, HILARY	1	2
1 6:54	*4-0			
1 6:38	4-2*	10 ft Left Base Line Jump shot by BAKER, AMANDA	1-1	100% 1-3 33.3%
1 5:47		Sub In: WYNN, VALARIE Out: BLAIR, TENNILLE		
1 5:47				
1 5:36	4-4*	SWISHER, HILARY, 2 Free Throws made both	2-2	100% 2-2 100%
1 5:11	*6-4			
1 4:57	6-6*	7 ft Lane Driving by BAKER, AMANDA	2-2	100% 2-5 40.0%
1 4:42	6-8*	2 ft Lane Driving by SWISHER, HILARY	1-1	100% 3-6 50.0%
1 4:34	*8-8			
1 4:18		Sub In: HENSON, TRYSH Out: YONTS, JESSICA		
1 4:05		Sub In: BLAIR, TENNILLE Out: HENSON, TRYSH		
1 4:05	*10-8			
1 3:18		Sub In: HENSON, TRYSH Out: TAYLOR, CHRISTIE		
1 2:22				
1 2:22		Sub In: YONTS, JESSICA Out: WYNN, VALARIE		
1 2:22		Sub In: TAYLOR, CHRISTIE Out: BAKER, AMANDA		
1 2:17				
1 2:12				
1 2:12	10-10*	3 ft Lane Jump shot by HENSON, TRYSH Assist by SWISHER, HILARY	1-1	100% 4-11 36.3%
1 1:59		Foul on YONTS, JESSICA	1	1
1 1:38	*12-10			3
1 1:34				
1 1:34		Sub In: BAKER, AMANDA Out: SWISHER, HILARY		
1 1:32				
1 0:12	12-12*	Bank Layup by YONTS, JESSICA Assist by BLAIR, TENNILLE	1-2	50.0% 5-14 35.7%
			1	2

WHITESBURG "LADY JACKETS" vs NICHOLAS COUNTY "LADY JACKETS"
1st Half Play by Play

PAGE : 2

Tip off at 2:30 p.m. on 03/24/93 at GIRLS STATE TOURNEY GM 2
Produced by the KHSAA Sweet Sixteen Stat Crew with FINAL III - a Product of LEXI

Player	Team	NICHOLAS COUNTY	Time	Score	WHITESBURG	Player	Team
SMOOT, NIKKI	DENKINS, KIM	HATTON, CHRISTIE, GEORGE, TARA, LINVILLE, RENEE Ball to LADY JACKETS 3 pt 23 ft Right Angle Jump shot by HATTON, CHRISTIE Assist by GEORGE, TARA	2 6:42	*15-12	YONTS, JESSICA, SWISHER, HILARY, BLAIR, TENNILLE, BAKER, AMANDA, TAYLOR, CHRISTIE		
1	3	Sub In: SCHANDING, E. Out: GEORGE, TARA	2 6:29	15-14*	16 ft Right Side Jump shot by BAKER, AMANDA Sub In: WYNN, VALARIE Out: BLAIR, TENNILLE	3-5	60.0% 6-16 37.5%
			2 6:17				
			2 5:35				
			2 5:29		Foul on YONTS, JESSICA	2	4
			2 5:14		Foul on YONTS, JESSICA	3	5
			2 5:14		Sub In: BLAIR, TENNILLE Out: YONTS, JESSICA		
2-2	100% 4-4	100% HATTON, CHRISTIE, 2 Free Throws made both	2 5:14	*17-14			
			2 4:56		Foul on WYNN, VALARIE	1	6
			2 4:33		Foul on WYNN, VALARIE	2	7
			2 4:33				
		REB: 12 A: 3 BLK: 3 TO: 8 PF: 4 S: 2 FT: 4-4 100% FG: 6-13 46.1%			REB: 5 A: 2 BLK: 0 TO: 4 PF: 7 S: 5 FT: 2-2 100% FG: 6-17 35.2%		
		T I M E - 0 U T WHITESBURG No. 1					
3-4	75.0% 5-6	83.3% HATTON, CHRISTIE, 2 Free Throws made 1st missed 2nd Foul on SCHANDING, E.	2 4:33	*18-14			
1	5		2 4:09				
			2 4:09	18-15*	SWISHER, HILARY, 2 Free Throws missed 1st made 2nd	3-4	75.0% 3-4 75.0%
			2 3:38	18-17*	16 ft Right Side Jump shot by TAYLOR, CHRISTIE Assist by BAKER, AMANDA	1-2	50.0% 7-20 35.0%
			2 3:02	18-19*	6 ft Lane Driving by BAKER, AMANDA	1	3
			2 1:55		Foul on BLAIR, TENNILLE	4-7	57.1% 8-21 38.0%
			2 1:55		Sub In: HENSON, TRYSH Out: TAYLOR, CHRISTIE	2	8
2-2	100% 7-8	87.5% SHOOT, NIKKI, 2 Free Throws made both	2 1:55	*20-19			
1-2	50.0% 7-15	46.6% Jump shot Layup by LINVILLE, RENEE Assist by SHOOT, NIKKI	2 1:26	*22-19			
1	4						
2	6	Foul on SCHANDING, E.					
			2 1:19				
			2 1:19		Sub In: ISOM, FELISHA Out: BLAIR, TENNILLE		
			2 1:04		Sub In: TAYLOR, CHRISTIE Out: SWISHER, HILARY		
			2 1:02		Foul on HENSON, TRYSH	1	9
3-4	75.0% 8-10	80.0% DENKINS, KIM, 1 & Bonus made 1st missed 2nd	2 1:02	*23-19			
3-6	50.0% 8-16	50.0% Bank Layup by DENKINS, KIM Assist by HATTON, CHRISTIE	2 0:55	*25-19			
3	5						
		Sub In: HOPKINS, M. Out: DENKINS, KIM	2 0:45		Foul on WYNN, VALARIE	3	10
			2 0:45				
			2 0:45		Sub In: ADAMS, CHRISTIE Out: WYNN, VALARIE		
5-6	83.3% 10-12	83.3% HATTON, CHRISTIE, 1 & Bonus made both	2 0:45	*27-19			
2	7	Foul on SHOOT, NIKKI	2 0:41				
		Sub In: GEORGE, TARA Out: SCHANDING, E.	2 0:41				
		Sub In: SCHANDING, E. Out: SHOOT, NIKKI	2 0:41				
			2 0:41				
0-1	00.0% 8-17	47.0% 4 ft Lane Jump shot by HOPKINS, M., missed	2 0:00		TAYLOR, CHRISTIE, 1 & Bonus missed 1st	0-1	00.0% 3-5 60.0%
0-1	Tot-1 0-1	Tot-15 Rebound by HOPKINS, M.	2 0:00				
0-2	00.0% 8-18	44.4% 6 ft Left Side Jump shot by HOPKINS, M., missed	2 0:00				
			2 0:00		Rebound by TAYLOR, CHRISTIE	0-1	Tot-1 0-1 Tot-11